



KON-BOOT For Windows Guide

<http://thelead82.com>

<http://www.kon-boot.com>

General notes

PLEASE KEEP YOUR ANTIVIRUS DISABLED WHILE EXTRACTING / BURNING / INSTALLING KON-BOOT

Table of contents

General notes	1
System Requirements	2
Using the GUI Installer.....	3
EFI and Secure Boot feature	3
Manual CD Installation Guide.....	5
Manual USB Installation Guide.....	8
Privilege Escalation Tutorial.....	8
Sticky Keys Tutorial.....	9
How to change profile password?.....	9
Troubleshooting.....	10
Friendly Asked Questions	11
Support	11

System Requirements

Operating system	Full version
Microsoft Windows XP Home Edition (Service Pack 2+)	Yes
Microsoft Windows Vista Home Basic 32Bit/64Bit	Yes (FULL SUPPORT)
Microsoft Windows Vista Home Premium 32Bit/64Bit	Yes (FULL SUPPORT)
Microsoft Windows Vista Business 32Bit/64Bit	Yes (FULL SUPPORT)
Microsoft Windows Vista Enterprise 32Bit/64Bit	Yes (FULL SUPPORT)
Microsoft Windows Server 2003 Standard 32Bit/64Bit	Yes (FULL SUPPORT)
Microsoft Windows Server 2003 Datacenter 32Bit/64Bit	Yes (FULL SUPPORT)
Microsoft Windows Server 2003 Enterprise 32Bit/64Bit	Yes (FULL SUPPORT)
Microsoft Windows Server 2003 Web Edition 32Bit/64Bit	Yes (FULL SUPPORT)
Microsoft Windows Server 2008 Standard 32Bit/64Bit	Yes (FULL SUPPORT)
Microsoft Windows Server 2008 Datacenter 32Bit/64Bit	Yes (FULL SUPPORT)
Microsoft Windows Server 2008 Enterprise 32Bit/64Bit	Yes (FULL SUPPORT)
Microsoft Windows 7 Home Premium 32Bit/64Bit	Yes (FULL SUPPORT)
Microsoft Windows 7 Professional 32Bit/64Bit	Yes (FULL SUPPORT)
Microsoft Windows 7 Ultimate 32Bit/64Bit	Yes (FULL SUPPORT (normal BIOS + EFI BIOS))
Microsoft Windows 8 and 8.1 (32Bit/64Bit)	Yes (FULL SUPPORT (normal BIOS + EFI BIOS)). Local and online authorization.

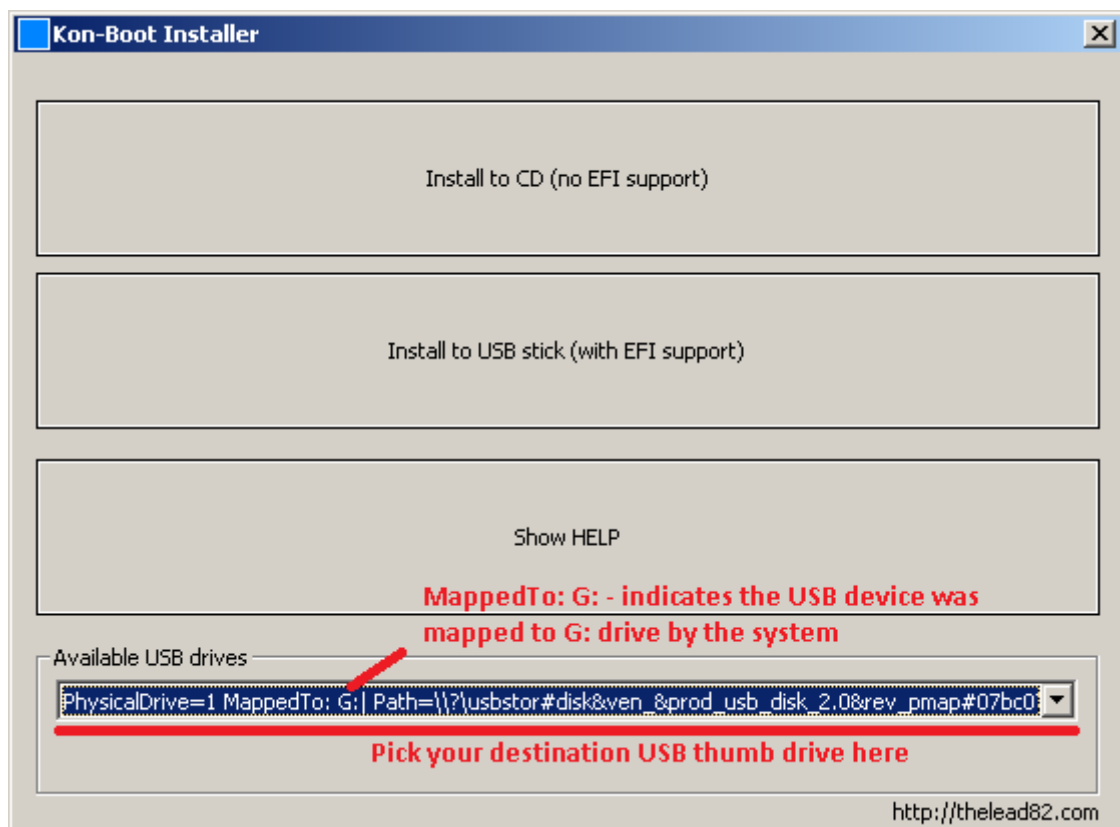
Additional requirements: Pentium III compatible processor, 10MB free space on the hard drive. CDROM, Floppy Drive or USB USB flash drive, keyboard, Internet connection (for product download). Compatible BIOS version.

Using the GUI Installer

The GUI installer is available since the Kon-Boot 2.2 version. **Kon-Boot installer requires Administrator rights (run it with right click & “Run as Administrator”).**

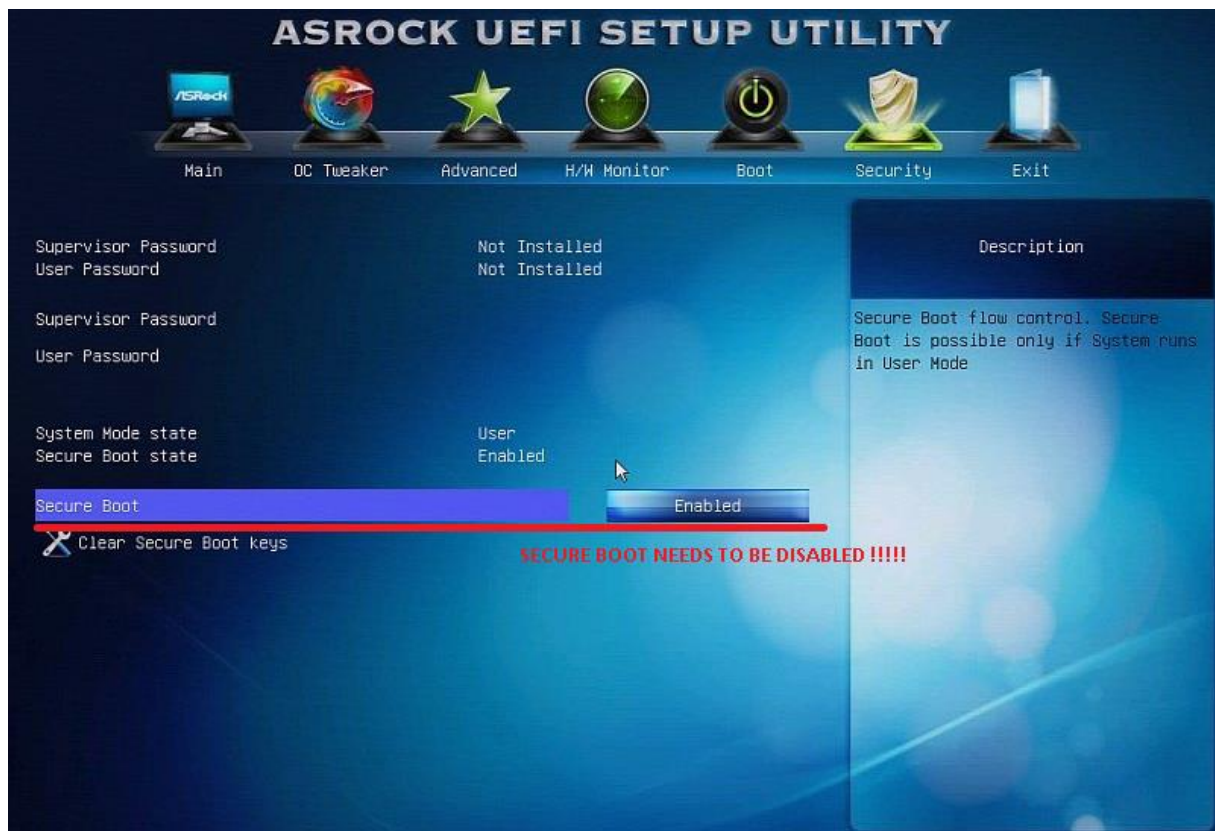
Available options are (see image below):

- “*Install to CD (no EFI support)*” – use this option if you want to burn Kon-Boot ISO image to your CD media. This options requires ImgBurn program (freeware download <http://www.imgburn.com>) and it does not support EFI booting. If you want to use the Kon-Boot EFI feature please use the “Install to USB stick” option. **After the ImgBurn window appears (assuming a clean CD media is inserted) just click the “Burn” icon and wait for the burning process to end.**
- “*Install to USB stick (with EFI support)*” – use this option if you want to install Kon-Boot to your USB thumb drive. Your USB thumb drive needs to be plugged in before running Kon-Boot installer (**additionally: please unplug all other USB drives that will not be used for kon-boot installation**). **Please pick your target USB thumb drive before picking “Install to USB” button (see the red line below).** Kon-Boot installation on the USB will be compatible with EFI bioses.
- “*Show Help*” – shows this PDF file.

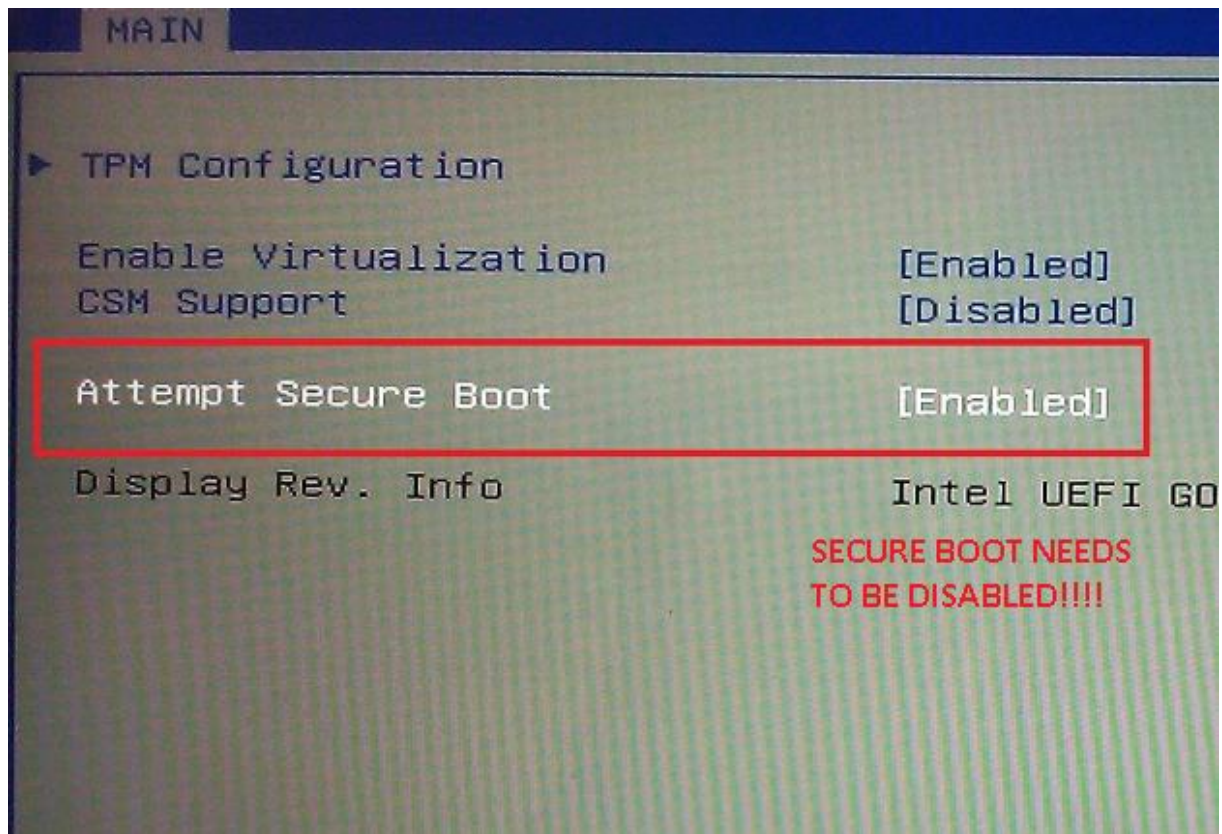


EFI and Secure Boot feature

In order to use Kon-Boot in EFI mode you need to make sure that the EFI BIOS is not configured to use Secure Boot feature. Secure Boot feature is typically disabled however in case of any problems please enter the BIOS setup and disable the Secure Boot option manually (see examples below).



Example 1. Secure Boot option – ASROCK motherboard



Example 2. Secure Boot option – Samsung PC

Manual CD Installation Guide

Attention: You need to burn kon-boot ISO image to your CD. Simply putting the ISO file there will not work. Tutorial is available below.

Requirements:

Your BIOS need to be configured to start from the CD media. If you don't know how to configure your BIOS please check external video tutorials:

http://www.youtube.com/results?search_query=bios+cd+boot

The recommended software for CD .iso burning is ImgBurn which is freely available for download: <http://www.imgburn.com/>

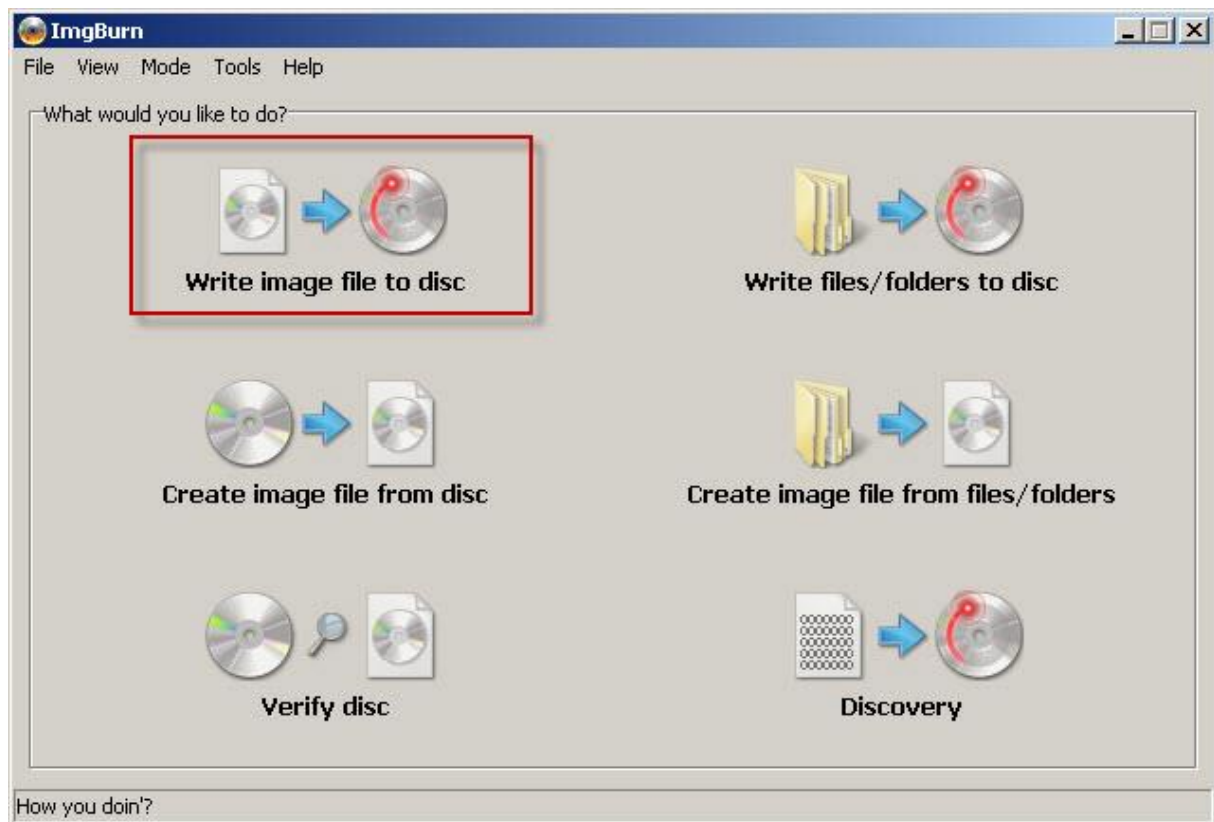
Please don't use AnyDVD, PowerISO and others since they are known to cause some problems.

After recording the target CD may look empty but it isn't – you just can't see the kon-boot code.

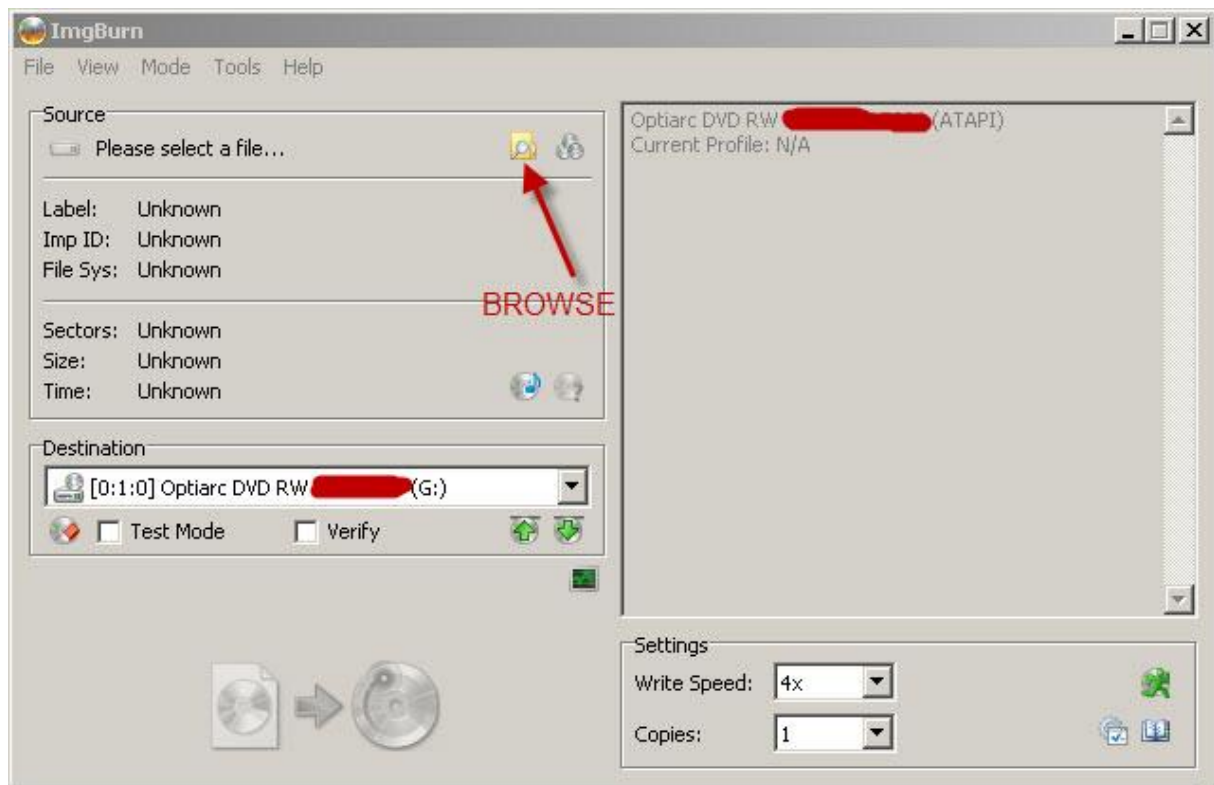
Installation steps:

1. Following tutorial uses the free recording software named ImgBurn.
2. Put blank CD-R media into your CD-RW / DVD-RW drive.

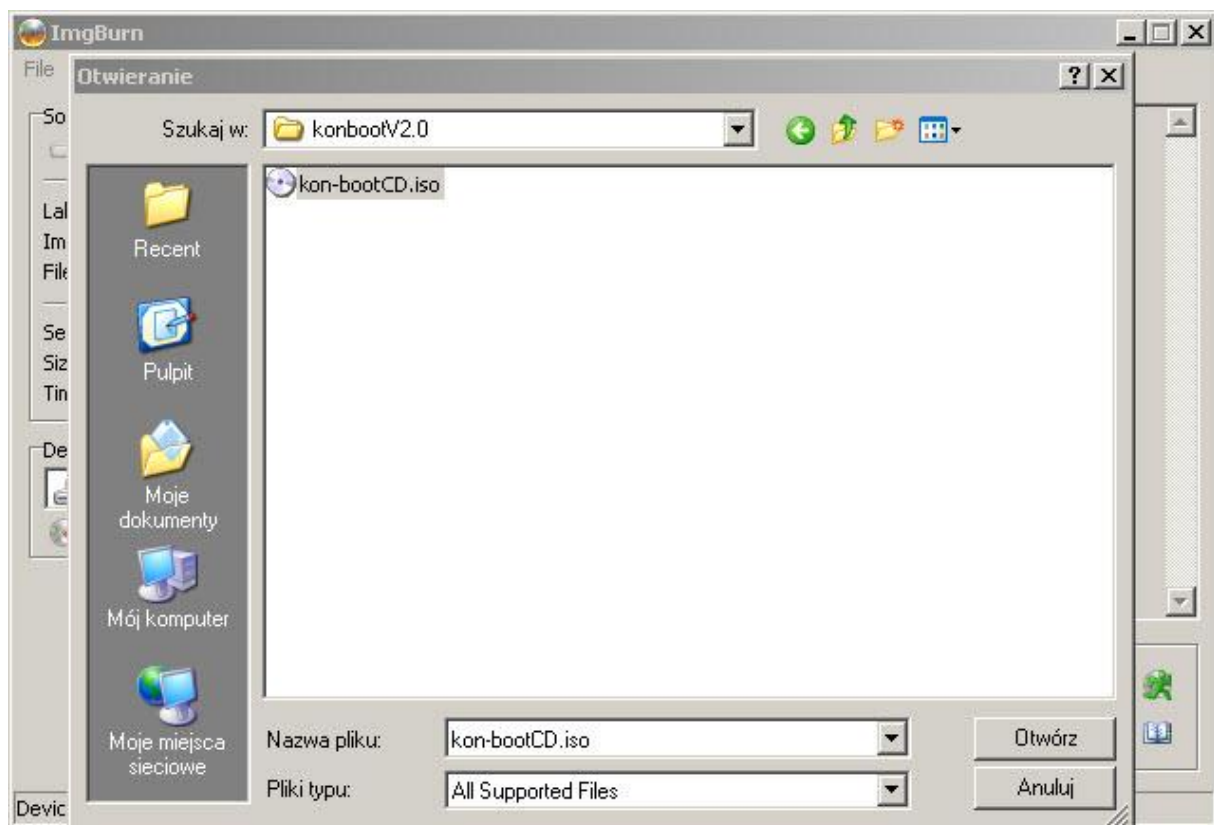
3. Run the ImgBurn program
4. Select "Write image file to disc"



5. Click "Browse"



6. Select "kon-bootCD.iso" – this file is located in your "kon-bootCD" directory.



7. Click burn and wait for the burning process to complete.

8. You are ready to use your Kon-Boot!

Manual USB Installation Guide

Requirements:

- Your BIOS need to be configured to start from the USB media. If you don't know how to configure your BIOS please check external video tutorials:
http://www.youtube.com/results?search_query=bios+usb+boot&og=bios+usb+boot
- USB thumb drive (FAT32 filesystem)

Please note: files located on your USB thumb drive may be overwritten!

Installation steps:

1. Insert your target USB thumb driver
2. If you are using Windows 7 or Vista please right click on "usb_install_RUNASADMIN.bat" and pick "Run As Administrator" option. Otherwise just double click on "usb_install_RUNASADMIN.bat" file.
3. Follow the displayed instructions.

USB Tutorial video is available here: <http://www.youtube.com/watch?v=sz2oLfaf40o>

Privilege Escalation Tutorial

Requirements:

- Windows operating system booted with kon-boot, ability to open console window (running cmd.exe)

Usage steps:

1. Boot your Microsoft Windows operating system with Kon-Boot
2. Execute (run) cmd.exe
3. Execute (run) following command in the console (assuming you are now in writable directory, default windows directory path): copy c:\windows\system32\cmd.exe cmk.exe
4. Execute (run) cmk.exe
5. Execute (run) cmd.exe (optional)

Video tutorial available here: <http://www.youtube.com/watch?v=OKgAgA9LfJc>

Sticky Keys Tutorial

What's Sticky Keys Feature?

Sticky keys is a new Kon-Boot escalation feature which allows user to spawn a console window with system admin rights before the user is logged in. Kon-Boot allows you to get console window while the Windows login screen is still active.

Requirements:

- Windows operating system booted with kon-boot
- Sticky keys must be enabled in your target Windows system (they are by default)
- Kon-bootV2.1 and higher

Usage steps:

1. In order to activate sticky keys feature please tap SHIFT 5 times (FAST). (it should work with default Windows configurations)

Video tutorial available here: <http://www.youtube.com/watch?v=cdZnUdZjapE>

How to change profile password?

To change your password you can try the following way (after booting with kon-boot):

- 1) Navigate the Start Menu to Control Panel
- 2) Select "User Accounts and Family Safety"
- 3) (if the User Account Control window appears) Click "Yes" and leave the password field empty
- 4) Select "Create a new account"
- 5) Create the account (pick a name) and set the permissions (administrator).
- 6) Disconnect Kon Boot and restart the computer to restore original Windows authentication functionality.

after restart:

- 1) Select your new User Account (the account you have created)
- 2) Navigate the Start Menu to Control Panel
- 3) Select "User Accounts and Family Safety"
- 4) Select the target User Account (the one you want to change)
- 5) Select "Change the password"
- 6) Input the new information for the account and click "Change password"
- 7) you are done

Troubleshooting

Problem: I can't record my CD - the .iso seems to be corrupted

Answer: Once again please verify that you have disabled your antivirus (see top sentence). Please follow our CD tutorial while burning the CD. It is not recommended to use any other burning tools besides ImgBurn. Please remember that you have to burn the .iso image to the cd. Simply putting the .iso file there will not work.

Problem: I can't create my USB (Windows7)

Answer: Please format (full format) your USB thumb drive with FAT32 file format. Go to your Kon-Boot USB directory (where "USB_INSTALL.vbs" resides). Right click on "usb_install_RUNASADMIN.bat" and pick the "Run as Administrator" option. Follow the displayed instructions.

Problem: My system does not boot from the Kon-Boot media. All I see is a black screen.

Answer: Typically it means that either the Kon-Boot media was not installed properly (see previous steps). Other potential problem may be related to wrong BIOS boot priority. You should at least see Kon-Boot start logo to verify you have installed it correctly.

Problem: I can see the Kon-Boot logo but it does not work after that

Answer: If you are seeing Windows logging screen and Kon-Boot cannot bypass the password please make sure you are not using authentication through domain. If this is not the case it probably means that your PC configuration is not supported. Please contact us for a refund.

Friendly Asked Questions

Question: What does Kon-Boot do?

Answer: Kon-Boot allows user to bypass the authentication process on Windows based systems, the password is bypassed not erased.

Question: Are there any permanent changes to my computer?

Answer: Nope, changes are only temporary - they are reseted after machine reboot.

Question: My antivirus detects Kon-Boot as a virus, is it a malicious code?

Answer: Nope, Kon-Boot is not a virus and does not contain any malicious code. We suggest disabling your antivirus when creating a Kon-Boot CD, Floppy, or USB flash drive.

Question: Does Kon-Boot work on domain controllers?

Answer: Kon-Boot will not bypass authentication of domain controllers. Although there are instances where a client computer will locally cache a domain login, and Kon-Boot may work in this case.

Question: Will Kon-Boot bypass hard drive encryption?

Answer: Nope.

Question: Kon-Boot gives an error related to BIOS, what is the problem?

Answer: Unfortunately in some BIOS-es the memory is too small for Kon-Boot to work, and therefore Kon-Boot is not compatible with this particular computer. There is nothing really we can do about it.

Question: Why I can't bypass my Windows 8 password authorization?

Answer: As stated in the system requirements section kon-boot only works with local authorization meaning you are probably using authorization through online account right now. As a temporal remedy you can try using the "[kon-boot sticky keys](#)" feature.

UPDATE: kon-boot is able to bypass online authorization since version 2.4.

Question: What does this error mean: "Error: Windows volume was not found"?

Answer: It means that you are trying to run kon-boot in UEFI mode but your Windows is not using UEFI loader. In order to fix this issue you need to either go to your BIOS setup and set the BOOT OPTION to USB (without UEFI) or manually delete EFI directory from the kon-boot USB media.

Support

Our support is available at: support@kon-boot.com